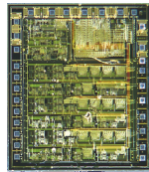


Company

ACT LSI INC.
Founded in 1986

The company is one of the few analog-digital mixed-mode LSI fables manufacturers in Japan. ACT has a track record of R&D in the sensor and micro processing area, with special focus on development of micro sensors for sense amps.

Product



AT1027C -- built-in correct function analog sense amp for HF charge transfer formulary capacitance type sensor

AT1027C is an excellent sensor system which can achieve a dynamic range at 60 to 70dB while detecting a very minimal amount of capacitance change like fF. It has a built-in feature that correct errors such as the total sensitivity of a sensing system, offset, and temperature change, with a combination of EEPROM.

Comment



“ After we had installed Tanner EDA tools, we had come a long way towards easier IC design of sense amps for capacitance. We are satisfied that we can use HiPer Verify directly for layout verification functionality without any change to the rule file that is provided by the fab.

Hiroshi Abe, President

Stable support

“The reason ACT switched to Tanner EDA tools was that it allowed us to depend on stable and continuous support. The company had been at the mercy of previous tools because their development or support policy changed due to a merger. We needed an environment that would allow us to concentrate on design.”

Highly valued usability of IC simulator, T-Spice

“We can easily repeat simulations with waving parameter finely and Tanner EDA took us a long way towards developing sense amps that detect differences among capacitance by aF.”

Building up a foundry-compatible layout environment at less than 1/5th the cost of the previous one

“Our company, a fabless manufacturer, is provided rule files in each case by a number of foundries. We are satisfied with HiPer Verify, which can be used directly without any change. Also, at installation, checking the verification results from Dracula one to one, we were able to get enough results to trust. “